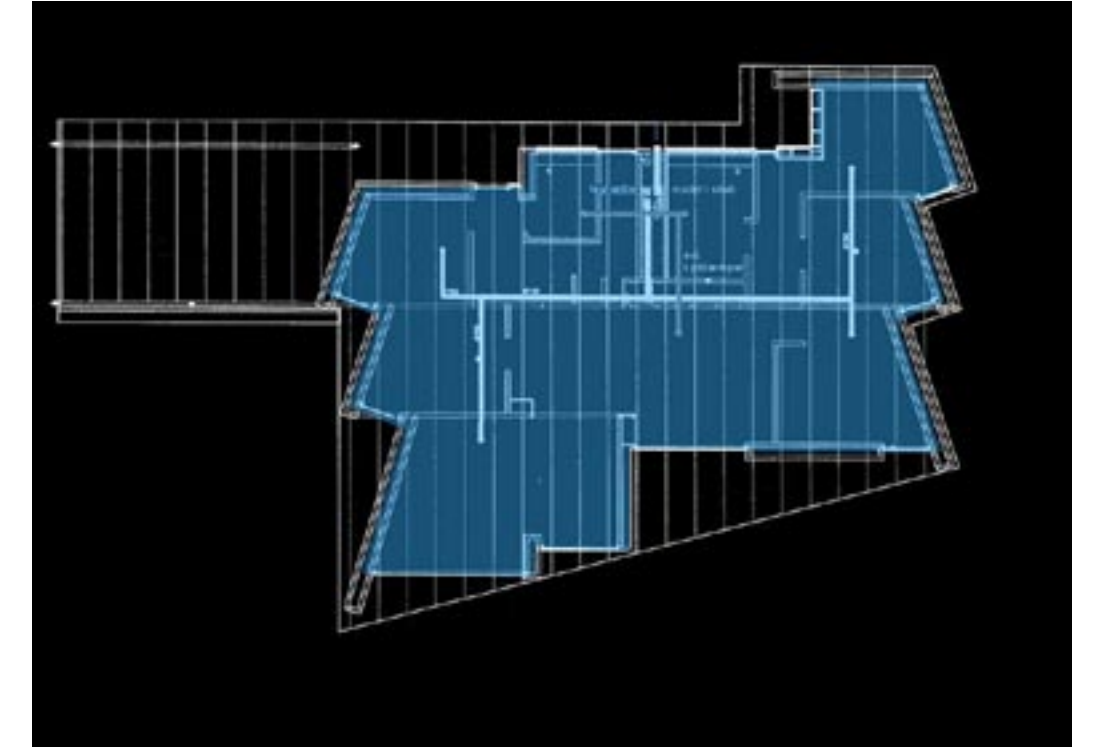


ARCHITECTURE SHAPED BY THE SUN



DEVELOPMENT OF A SUSTAINABLE ECOLOGICALLY FRIENDLY HOME BEING FIRST AND FOREMOST A PLACE OF FAMILY LIFE.

THE YOUNG DANISH ARCHITECT AND DESIGNER LARS SKINHØJ HAS DEVELOPED A USER FRIENDLY SUSTAINABLE HOUSE WITH AN ARCHITECTURE SHAPED BY THE SUN AND FUNCTIONALITY. NO SOLAR PANELS ARE USED AND EXPENSIVE, COMPLICATED TECHNOLOGY AVOIDED. INSTEAD THE HOUSE MAXIMIZES PASSIVE SOLAR GAINS AND RETAINS MOST OF THE HEAT PRODUCED.



THE FIVE BEDROOM HOUSE IS DESIGNED AROUND THE ORIENTATION OF THE SOLAR PATH, OPENING ITSELF TO THE SUN WITH FLOOR TO CEILING WINDOWS IN ALL ROOMS. IT HAS A SPECIAL ROOF DESIGN TO OPTIMISE HEAT FLOW AND AVOID OVERHEATING IN THE SUMMER.

ON TOP OF THE PASSIVE SOLAR ORIENTATION THERE ARE LOW-E WINDOWS, ENERGY STAR APPLIANCES, AND A TANKLESS BOILER FOR HOT WATER. THE HOME SAVES WATER WITH LOW-FLOW RESTRICTORS AND DUAL FLUSH TOILETS. A SIMPLE HEAT RECOVERY UNIT CIRCULATE FRESH AIR WARMED BY THE EXCHANGER TO ALL AREAS OF THE HOUSE.

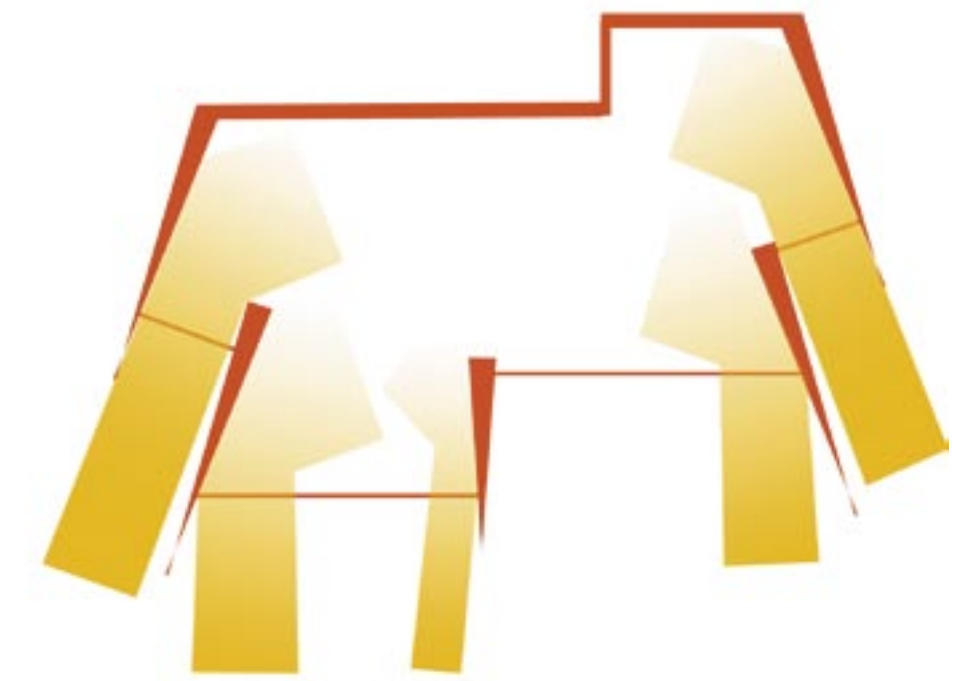
GREAT CARE WAS EMPLOYED TO DESIGN A HOME THAT IS USING HEALTHY BREATHABLE (LOW-ALLERGY) MATERIALS FREE OF ADDITIVES, AND AN INTERIOR DESIGN THAT NOT ONLY TAKES THE FUNCTIONAL SCANDINAVIAN DESIGN CONCEPT BUT ALSO IS USER FRIENDLY TO THE HANDICAPPED AND ELDERLY.



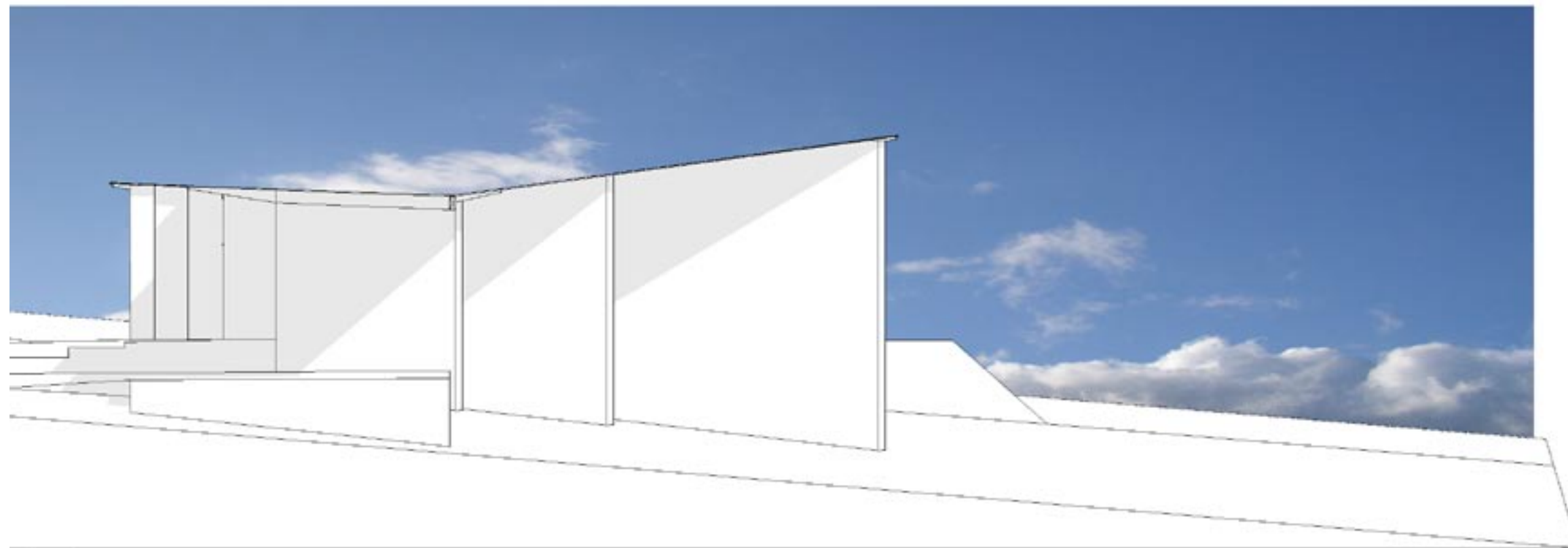
energy concepts:



Optimal heat circulation



deep light reflection and passive solar heating



maximize light and passive solar gains in the winter



limited solar heating in the summer